



AVALON SCHOOL

Weekly Newsletter

Friday 14th November 2025

Please click on the links below for further news and useful information



Follow the link below for our school website home page:

[Avalon School Home Page](#)



Follow us on social media

Instagram: [@avalonschoolwestkirby](#)



Facebook: [AvalonSchoolWirral](#)



Follow the links below for all the latest news and our weekly newsletters

[Latest News](#)

[Weekly Newsletters](#)



Follow the links below for all key information including letters, term date etc:

[Letters & Documents](#)

[Term Dates](#)

[Other Key Information](#)



Follow the link below for all our calendar dates:

[Up and coming events - Calendar](#)



Follow the link below for information about our Before & After Care Provision:

[Before & After School Care](#)



Follow the link below for information on our PTA events:

[PTA News & Events](#)

CELEBRATING ACHIEVEMENTS



St Andrew



St David



St George



St Patrick

House Points

330

296

290

233

Total House Points for the Year To-date

2147

2193

2157

2272

Merit Badges

Reception

NP

Year 1

RD

Year 2

TR

Year 3

BS

Year 4

JD

HP

Year 5

FPS

Year 6

SS

DH

Achievement Certificates



Reception	IH
Year 1	TC AR
Year 2	CN
Year 3	IP
Year 4	LGR
Year 5	PT
Year 6	SW

Mathletics Pupil of the Week



Infants	JAJ
Lower Juniors (Y3 & Y4)	JD
Upper Juniors (Y5 & Y6)	AC

Reading Star!



Reception	BW
Year 1	JAJ
Year 2	LL
Year 3	DK
Year 4	LDC
Year 5	SA
Year 6	WMCD

Golden Table

Rec	NP	Y1	TJ	Y2	HT
Y3	WR	Y4	LGR	Y5	SA
		Y6	AC		

NEWS, NOTICES & REMINDERS

Parents' Evening In-Person Consultations

Nursery to Year 6 – Week Commencing 24th November 2025



Parent Evening Consultation Meetings will be held in-person in your child's classroom with their teacher/key worker. Parents/Carers will receive their child's progress report prior to their parent consultation meeting and have the opportunity to see their child's work.

We will again be using the School Cloud website for parents to set appointments with teachers/key workers and manage bookings online. School Cloud is a website platform and thus can be accessed from all iPhone and Android phones, iPads, and tablets, as well as laptops and desktop devices.

We do, however, recognise that not everyone may be able to access the online system to make appointments; in this instance, please contact the school office who will be able to make appointments for you.

Consultation meeting will be set to **10 minutes slots** however if you require a lengthier conversation, we request that you contact the school office to arrange an appointment at a separate time.

If you are unable to attend the evening or to book an appointment, please email the school office to discuss.

The appointment booking system will open on Friday 7th November 2025 from 4pm and will close at 4pm on **Friday 21st November 2025**.

Should you wish to make any changes after this date please contact the school office or annevans@avalon-school.co.uk

Please visit <https://avalon.schoolcloud.co.uk/> to book your appointments. Please note that Google Chrome is the most reliable browser to use to access the School Cloud booking system.

Class	Teacher / Key Worker	Dates & Times Appointments Available
Nursery	Jackie Duffy Mandy Elliott Lucy Hunt	Tuesday 25 th November from 4pm Monday 24 th November from 4pm Thursday 27 th November from 4pm
Pre-School	Alison Prandle Jo Rice Julie Bache	Monday 24 th November from 4pm Tuesday 25 th November from 4pm Thursday 27 th November from 4pm
Reception	Mrs Daniel	Thursday 27 th November from 4pm
Year 1	Mrs Creedon	Thursday 27 th November from 4pm
Year 2	Miss Harrington	Tuesday 25 th November from 4pm
Year 3	Mrs Parkins	Thursday 27 th November from 4pm
Year 4	Mr Ashton	Tuesday 25 th November 4pm
Year 5	Mrs Jones & Mrs Kililiku	Tuesday 25 th November from 4pm
Year 6	Mrs Kililiku & Mrs Jones	Thursday 27 th November from 3pm

Christmas Bauble Decoration Competition Deadline for Entries – Monday 1st December 2025



The children have taken home a Christmas Baubles to decorate our school Christmas Tree. We will again be running a competition for each child to decorate a Christmas bauble to be placed on the tree in the School Office Foyer. The winning decoration from each class will be announced at the PTA Christmas Fair and winners will each receive a prize.

All competition entries must be returned to school with a £2 donation by Monday 1st December to be entered into the competition.

For more details, please click on the link below:
[Christmas Bauble Competition Letter](#)

PTA - Christmas Jumper & Other Christmas Clothing



Avalon PTA have set up a clothing rail in the Nursery Foyer with Christmas Jumpers and/or other Christmas clothing items for sale. We would suggest a donation of £2.00 or more per item! If you would like to purchase any of the donated items, an honesty box will be available in the Foyer (cash is the preferred payment option) however you can also make a payment via bank transfer. Please see bank details below:

A/C Name: Avalon PTA

A/C N°: 00100455

SC: 60-23-17

Ref: Christmas

Thank you for all your support

Anti-Bullying Week / Odd Sock Day



ANTI-BULLYING ALLIANCE

On Monday, we kicked off Anti-Bullying Week with our Odd Sock Day. Everyone rocked their brightest, boldest, oddest socks to celebrate what makes each of us unique. We raised

£50.00

Which will be donated to the Anti-Bullying Alliance.



Children in Need Day



Thank you to all who were able to attend our Children in Need Big Breakfast and to everyone who donated and bought the Pudsey wristbands. We hope everyone had a great time! Thank you to our amazing Catering Team and School Council who helped make it a BIG success!

So far, we have managed to raise an amazing:

£414.20

You can still donate by scanning the QR code below.



Year 1 & Year 2 Diwali "Festival of Light"



Our Year 1 and Year 2 children had a wonderful time learning all about Diwali as part of their RE lessons today. The classroom was filled with colour, creativity and lots of smiles as the children learned about the Festival of Lights through hands-on activities.



A huge thank you to the amazing parents who came in to support the session, your involvement made the experience even more special for the children.

Nursery & Pre-School Stay & Play Sessions Tuesday 18th Wednesday 19th and Thursday 20th November 2025



We would like to invite you to a "Stay & Play" session during week commencing Monday 17th November. You will have the opportunity to stay with your child and join in with learning activities. The EYFS staff will also be on hand to discuss progress and answer any questions you may have.

Stay & Play sessions are available for parents & carers either in the morning or the afternoon as follows:

Tuesday 18 th November	9.15am-10.15am
Wednesday 19 th November	2pm-3pm
Thursday 20 th November	9.15am-10.15am

Please indicate which session is best for you and return it to the school office **by Friday 14th November**. Parents/carers must report to the school office to sign in prior to attending the session. For any further enquiries, please contact the school office or your child's teacher/keyworker.

Please click on the link below for more information.
[Nursery & Pre-School Stay & Play Sessions](#)

Reception Stay & Play Sessions Tuesday 18th Wednesday 19th and Thursday 20th November 2025



We would like to invite you to a "Stay & Play" session during week commencing Monday 17th November. You will have the opportunity to stay with your child and join in with learning activities. The EYFS staff will also be on hand to discuss progress and answer any questions you may have.

Stay & Play sessions are available for parents & carers either in the morning or the afternoon as follows:

Tuesday 18 th November	2pm-3pm
Wednesday 19 th November	9am-10am
Thursday 20 th November	2pm-3pm

Please indicate which session is best for you and return it to the school office **by Friday 14th November**. Parents/carers must report to the

school office to sign in prior to attending the session. For any further enquiries, please contact the school office or your child's teacher/keyworker.

Please click on the link below for more information.

[Reception Stay & Play Sessions Letter](#)

Year 5 Train Journey from West Kirby Station to Lime Street Station Friday 21st November 2025



As part of their PSHCEE curriculum the Year 5 children will be learning about road and rail safety. To enhance the children's understanding an educational visit has been arranged to visit West Kirby Train Station and Liverpool Lime Street Station on Friday 21st November 2025.

For more information, please click on the link below:

[Year 5 Train trip to Lime Street Station Letter](#)

Nursery to Year 6 Anti-Bullying, Sharing Assembly Friday 21st November 2025 at 9.10am



We will be celebrating and sharing a variety of the activities and learning that children will have participated in during Anti Bullying week, such as songs, dancing, role play and other cross curricular pursuits. We would very much like parents to join us for this very special event. We anticipate that the assembly will last for around 30 to 40 minutes. We look forward to seeing you there and for your ongoing support with this very important topic.

Lunches



Lunch menu for the week commencing Monday 17th November 2025



Click on the following link for our [Lunch Menus](#)

Favourite Meal of the Week	
Main	Chicken Korma & Rice
Pudding	Chocolate Crunch

Reception Visit to Caldy Care Home Tuesday 25th November 2025

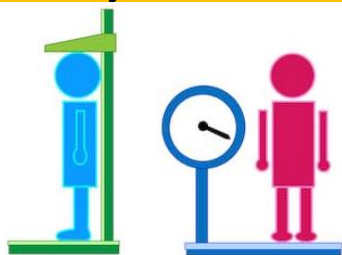


Once again, Reception class will be visiting the Old Garden Care Home on the afternoon of Tuesday 25th November 2025. Please could all consent forms be returned to the school office by Friday 21st November.

For more information and to access the consent form, please click on the link below:

[Reception Visit to Caldy Manor Care Home](#)

Reception and Year 6 Wirral NHS Height and Weight Checks Tuesday 25th November 2025



Staff from Wirral NHS will be attending school on Tuesday 25th November to undertake NCMP (Height and Weight) for both Reception and Year 6 children as part of the National Measurement Programme. The date for this visit will be confirmed by the NHS in due course.

Children are measured fully clothed, except for their coats and shoes, in a private space away from other pupils.

If you wish for your child to NOT take part, please contact 0-19 Health & Wellbeing Services on 0151 514 0219

For more details, please click on the link below:
[NCMP \(Height& Weight Letter\)](#)

PTA Wreath Making Workshop Saturday 29th November at 6.30pm



The PTA will be holding a Wreath Making Workshop at The Beacon Room at St Bridget's Church Hall at 6.30pm. The costs are £40.00 for a regular size and £50.00 for a large wreath. All materials are included including mulled wine and mince pies on arrival. Please bring along a pair of secateurs and light gardening gloves. BYO bottle to get into the festive mood.

For more information, including a booking form, please click on the link below:

[PTA Wreath Making Competition Letter](#)
[Wreath Making Booking Form](#)

PTA Christmas Fair Friday 5th December 2025



The PTA will be holding a Christmas Fair, for children only, on Friday 5th December during the school day. There will be lots of stalls including face painting, games and enterprise stalls. We would be grateful for donations of packs of sweets and raffle prizes, to be delivered to the school office. Staff will accompany children to the fair, and we would advise a maximum of £10.00 spending money per child.



Start of the Day Arrangements



Before school club is from 7.45am to 8.30am. Children attending before school club should enter the hall via the main school glass entrance doors.

From 8.30am to 8.45am parents may drop children off at the school gate which will be manned by Avalon staff. Alternatively parents and carers who may wish to bring their child onto the school site and drop their child off at the allocated entrance doors.

For Reception, Year 1 and Year 2, this will be at the main glass entrance doors. For all Junior children, Year 3 to Year 6, this will be at the front door of the junior building.

Arriving Late to School



Late attendance (after 8.45am). If your child is late coming into school, we then ask that parents ring the intercom for assistance and bring their child directly into the school office for registration.

Extra-Curricular Clubs



Extra-Curricular Clubs will end week for this term, week commencing Monday 24th November.

Extra-curricular clubs are as follows:

LOWER SCHOOL CLUBS (Reception to Year 2)

Day	Club	Time	Year Group
Monday	Ballet	2.30pm to 3pm	Pre-School
	Ballet	3.05pm to 3.35pm	Rec – Y2
Tuesday	Multi-Sports	3.05pm to 3.40pm	Rec – Y2
Wednesday	Construction	Lunchtime	Rec – Y2
	Dance Fun Club	3.05pm to 3.35pm	Rec – Y2
	Jo Jingles	Lunchtime	Rec – Y2
Thursday	Football	3.05pm to 3.35pm	Rec – Y2

UPPER SCHOOL CLUBS (Year 3 to Year 6)

Day	Club	Time	Year Group
Monday	Acro Dance	3.40pm to 4.40pm	Y3 – Y6
	Lego Club	Lunchtime	Y5 – Y6
Tuesday	Film Club	Lunchtime	Y5 – Y6
	Running Club	3.40pm to 4.30pm	Y5 – Y6
Wednesday	Computing Club	Lunchtime	Y3 – Y6
	Table Tennis	Lunchtime	Y3 - Y4
	Art Club	3.40pm to 4.30pm	Y5 – Y6
	Lego Club	3.40pm to 4.30pm	Y3 – Y4
Thursday	Netball	3.40pm to 4.40pm	Y3 – Y6
	Library	Lunchtime	Y3 – Y6
	Verbal Reasoning	3.40pm to 4.30pm	Y5
Friday	Football	3.40pm to 4.30pm	Y3 – Y6

Acro Dance Sign up: lou.rutter@yahoo.co.uk

Ballet Sign up: lou.rutter@yahoo.co.uk
Jo Jingles Sign up: louisejingles@icloud.com

To book all other activities, please click on the link below:
https://docs.google.com/forms/d/e/1FAIpQLSdU3bKK32aFXKYc2gvT5IuUuUQw_KL4qQ_tvKsn_gF7-ZAOMw/viewform?usp=sf_link

Activity 4 All sessions can be booked on the link below:
<https://ecom.roller.app/activityforallwirral/arrowepark/en/product/1124635?date=2025-09-16>

Please note that children attending sports clubs (including Acro Dance) should come to school wearing their school PE kit. For ballet the children should wear their ballet kit.

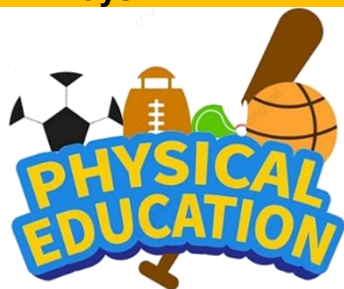
End of the Day Arrangements



Children's collection arrangements will be as follows:

Year Group	Collection Time	Collect From
Nursery & Pre-School	At the end of session	Nursery Entrance
Reception	3.05pm	Nursery Entrance
Year 1	3.05pm	Hall Door
Year 2	3.05pm	Hall Door
Year 3	3.40pm	Junior House Front Door
Year 4	3.40pm	Junior House Front Door
Year 5	3.40pm	Main School Glass Entrance
Year 6	3.40pm	Main School Glass Entrance

PE Days



Below are the days that the children will be having their PE Lessons. Children should come into school dressed in their full PE kit on their designated PE days. Please could we also request that children have their School Blazer or Waterproof Coat with them, particularly as the weather will soon be turning much cooler. Hats and Caps will not be required on designed PE kit days

Year Group	PE Day
Reception	Wednesday
Year 1	Friday
Year 2	Friday
Year 3	Thursday
Year 4	Tuesday
Year 5	Wednesday
Year 6	Wednesday

IMPORTANT REMINDER Breaktime Snacks



We have a number of children in Avalon School with severe allergies. It is vitally important to ensure the health and safety of all the children that only fruit, and vegetables are brought into school for break time snacks.

Snack which are high in salt, sugar and fat such as salted popcorn, crisps, and other sugary snacks are not appropriate to be brought into school.

Thank you for your co-operation.

Recycle Your Empty Printer at School



As part of a recycling initiative, we are asking all parents and carers if they would kindly drop off any used Inkjet and toner cartridges to the blue Inkjet recycling box situated outside the school office.

Inkjet and toner cartridges can take up to 1,000 years to compose, so if we can help recycle them, and raise some money for the school at the same time, this is a win-win situation!



Safeguarding



To ensure the safety and wellbeing of all our pupils, we kindly remind you that parents and carers should only enter the school buildings when **with a member of staff or you have shared a valid Enhanced DBS check with the school.**

This is a vital part of our safeguarding procedures and helps us maintain a secure environment for everyone.

Thank you for your cooperation and understanding.

Safety Reminder!



We kindly remind parents that children should not play on the playground area, outside of school hours, unless closely supervised by an adult.

Whilst we strive to ensure everyone's safety during school hours, we cannot be held liable for your children's safety once they have been collected and are in parents' care.

Thank you for your understanding and cooperation.

Supporting Families Together: Wirral's Family Toolbox



At Avalon School and Nursery, we understand that parenting can be both rewarding and challenging. That's why we're proud to work in partnership with **Wirral's Family Toolbox** – a free online resource designed to support families in finding the right help, at the right time.

Family Toolbox is a space where you can explore practical advice, local services, and useful tools to help your family thrive. Whether you're looking for tips on routines, managing behaviour, mental health support, or advice on housing and finances, Family Toolbox connects you to trusted information and services – all in one place.

By accessing Family Toolbox early, families can often find solutions before challenges become more complex. This enables **early help**, which we at Avalon, strongly support, working alongside you to build a team around your child when needed.

To explore what's available and find support that works for you, visit:

👉 www.familytoolbox.co.uk

Together, we can help make sure every child has the best possible start.

Mental Well Being Support



Below are some helpful links to websites and services that can be accessed in relation to mental well being support. We have a number of trained Mental Health First aiders in school, but as always, please do get in touch if there is anything further that you would like School to do to support a child, parent or family further.

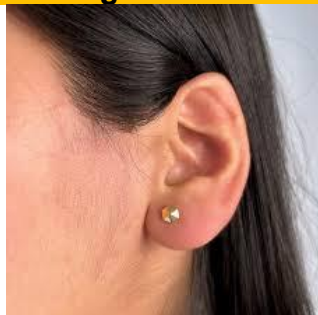
[Home - Kooth](#)

[Shout: The UK's free, confidential, 24/7 mental health text service | Shout 85258](#)

MyMind Crisis Line Wirral Services - 0800 145 6485 or if you or a young person is at immediate risk and needs urgent help with their mental health, please call the 24/7 urgent mental health crisis line by calling NHS 111 and selecting the mental health option.

[Mental health | Wirral InfoBank](#) - Wirral directory with information about different services.

Earrings in School



It has come to our attention that there are a number of children wearing earrings in school. Our uniform policy states that for health and safety reasons no jewellery with the exception of a watch may be worn in school.

Therefore, we would be grateful if you could remind children to remove earrings and any other jewellery before coming to school.

We understand that a number of children have only recently had their ears pierced and although it is not ideal, in this instance could we ask parents/carers to ensure that earrings are covered each morning with plasters.

Once the 6-week healing process is complete the earrings should be removed and not worn during school time.

Healthy Snacks



We know that many parents like to celebrate birthdays and other occasions with special treats. We encourage parents to celebrate with non-food items such as stickers, pencils, themed erasers, or other trinkets, rather than food.

Thank you for your understanding and co-operation.

Wet Play Bags



As we start a new academic year, if any children need a new wet bag play, please contact the school office via email schooloffice@avalon-school.co.uk. New wet play bags are charged at £5.00 each.

All children in Reception and new children throughout the main school will be provided with a wet play bag and instructions as to what can be included.

Avalon School Water Bottles



Should any children need a new Avalon School water bottle, please contact the school office via email schooloffice@avalon-school.co.uk. New water bottles are charged at £2.75 each.

Parking & Driving Around School



To help keep all members of our school community and our wider community safe please remember not to park on the zig-zag lines outside school when dropping off or picking up children and to aid visibility please avoid parking on the road directly outside school. We would also ask any parents using Warwick Drive to be extra careful and aware of pedestrians using this route to access school.

It would also be much appreciated if parents consider the through traffic along Caldy Road and avoid attempting U-turns in the road. These sorts of manoeuvres in the road can be particularly dangerous for all road users and pedestrians during these busy times of day.

We thank you for your continued support and understanding as we all adapt to different routines.

Scooters and Bicycles



We now have four bicycle and scooter racks which are positioned underneath the school office window, available for use by the children.

Please note that bicycles or scooters are left at owner's risk. Unfortunately, school cannot take any responsibility for loss or damage.

MyNameTags.com



Help fund raise for Abalon School by buying your child's uniform labels from MyNameTags.

Go to www.MyNameTags.com

Use the Avalon School unique ID 114883

For every purchase Avalon School will receive 24% commission

Uniform Supplier

UNIFORMITY Schoolwear

Uniform can be purchased from Uniformity Clothing using the link below:

<http://www.uniformityschools.com/>

PTA - Gift Amnesty



The PTA are looking for any duplicate/unwanted gifts you can donate for any future raffle prizes. If you can help, please drop off any gifts to the School Office.

We thank you in advance for any future donations



Pre-Loved Uniform



If you have any requests for uniform please email on uniformpta@gmail.com Whilst we are now in a position to accept donations, please can you make sure that all items donated are wearable and not threadbare, and clean. Also, we can **only** accept the following Avalon specific uniform:

- Blazers/Black Raincoats
- Caps/Hats/Boaters
- Brown V Neck Jumpers/Cardigans
- Brown PE Sweatshirts/Joggers
- Tunics/Summer Dresses

Please leave with the School Office. Thank you.

Scam Emails Warning



We have been made aware by the Independent Schools Council of recent email scams involving people posing as prospective parents to try to gain access to school details including logo's, email templates etc. This information is then fraudulently used to scam parents into making payments into their accounts. If you do receive an email of this nature or if you are unsure about an email, we would be most grateful if you could contact the school immediately.

Please be assured that our own bank account details have not and will not, for the foreseeable future, change. Avalon School does not send out emails regarding unsolicited discount rates. Any emails you receive containing invoices or statements will be sent from either accounts@avalon-school.co.uk or annevans@avalon-school.co.uk



2025-2026

Autumn Term	
Staff Training Days	Monday 1 st & Tuesday 2 nd September 2025
Term Starts	Wednesday 3 rd September 2025
Half-Term	Monday 20th October to Friday 31st October 2025
Ends	Friday 12 th December 2025 12 noon finish
Spring Term	
Staff Training Day	Monday 5 th January 2026
Term Starts	Tuesday 6 th January 2026
Half-Term	Monday 16th February to Friday 20th February 2026
Ends	Friday 27 th March 2026 Normal finish time
Summer Term	
Staff Training Day	Monday 13 th April 2026
Term Starts	Tuesday 14 th April 2026
May Day	Monday 4th May 2026
Half-Term	Monday 25th May to Friday 29th May 2026
Ends	Friday 10 th July 2026 Normal finish time

Should you have any concerns or suggestions, please do not hesitate to contact us:

Avalon School, Caldly Road, West Kirby, CH48 2HE
Tel: 0151 625 6993

Email: schooloffice@avalon-school.co.uk

Headteacher: Mrs J Callaway jcallaway@avalon-school.co.uk



NOVEMBER

Tuesday 18th

Wednesday 19th

Nursery & Pre-School Stay & Play Session 9.15am-10.15am
Reception Stay & Play Session 2pm-3pm
Nursery & Pre-School Stay & Play Session 2pm-3pm
Reception Stay & Play Session 9am-10am

Thursday 20 th	Nursery & Pre-School Stay & Play Session 9.15am-10.15am
Friday 21 st	Reception Stay & Play Session 2pm-3pm Anti-bullying Sharing Assembly (Nursery to Year 6)
Monday 24 th	Year 5 Trip to Lime Street station Parents Evening Consultations Nursery – Jackie Duffy from 4pm
Tuesday 25 th	Nursery – Mandy Elliott from 4pm Parents Evening Consultations Nursery – Lucy Hunt from 4pm Pre-School – Alison Prandle from 4pm Pre-School – Jo Rice from 4pm Year 2 – Miss Harrington from 4pm Year 4 – Mr Ashton from 4pm Year 5 – Mrs Jones & Mrs Kililiku
Thursday 27 th	Reception visit to Caldy Manor Care Home Parents Evening Consultations Pre-School – Julie Bache from 4pm Reception – Mrs Daniel from 4pm Year 1 – Mrs Creedon from 4pm Year 3 – Mrs Parkins from 4pm Year 6 – Mrs Kililiku & Mrs Jones from 4pm
Monday 24 th to Friday 28 th	UK Parliament Week
Saturday 29 th	PTA Wreath Making Workshop at St Bridget's Church Hall
DECEMBER	
Monday 1 st	Deadline for Christmas Bauble Entries
Wednesday 3 rd	Nursery & Pre-School Nativity at 2pm
Thursday 4 th	Infant & Junior Nativity at 2pm
Friday 5 th	PTA Christmas Fair Visit by Matthew Patrick MP
Tuesday 9 th	Theatre Trip (Year 3 to Year 6)
Wednesday 10 th	Nursery, Pre-School, Reception, Year 1 & Year 2 Christmas Party
Thursday 11 th	Christmas Lunch and Christmas Jumper Day
Friday 12 th	Rehearsal for Christmas Celebration at St Bridget's Church Christmas Celebration Service at St Bridget's Church 12 NOON FINISH NO AFTER SCHOOL CARE AVAILABLE 12pm
Monday 15 th December to Friday 2 nd January 2025	Christmas Holidays
JANUARY 2026	
Monday 5 th	Staff INSET day
Tuesday 6 th	Children return to school



Wreath Making Workshop

Saturday 29th November, 6.30pm,
The Beacon Room,
at St. Bridget's Church Hall

£40 regular wreath / £50 large wreath

All materials included
Mulled wine and mince pie on arrival.

Please bring secateurs and light
gardening gloves advised.

Friends and family welcome
BYO bottle to get into the festive mood!



Please pick up a form from
the office to book your place.

Want to help our PTA raise money
that will benefit your child?



Turn your everyday shopping into PTA funds with

Easyfundraising

You shop, brands donate to our PTA and
the best bit is it won't cost you anything extra!



easyfundraising

Help us make a difference when you shop.

Visit: www.easyfundraising.org.uk

Download the app.



Visit www.easyfundraising.org.uk

Sign up and search for **Avalon School PTA, Wirral**

Your favourite brands donate to our PTA whenever
you shop with them

SHOP WITH 8,000+ BRANDS INCLUDING:

Booking.com

ebay

M&S

GROUPON



TUI

JOHN
LEWIS



Viking

ASOS



Uber Eats

No need
to book
Just come along



£5
per child
Cash or Card
Payments
Accepted

Avalon School Parent & Toddler Group



Wednesdays
9.30am to 10.30am



Babies to 5 Years

Guest Session Leaders

Avalon School, Caldy Road, West Kirby, Wirral, CH48 2HE
T: 0151 625 6993 / E: schooloffice@avalon-school.co.uk
www.avalon-school.co.uk